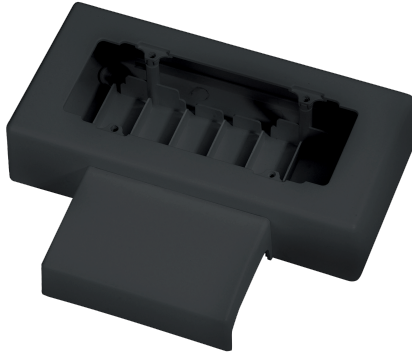


**EC20116**

**6-MODULE TOWER ADAPTOR BOX 100 mm HOLE C.E DISTANCE-SLATE RAL 7021**



Trunkings > Wall and ceiling > Skirting and wall trunkings > Series 20 - trunking fittings > Modular boxes for wiring devices

**Technical Symbols/Marks/Approvals**



**Norms**

EN 50085-1 EN 50085-2-1

**Description**

The 6/7-module 100 mm center-to-center appliance box can accommodate up to 7 Italian standard appliances or 3 multi-standard sockets. The large internal volume allows for the installation of any type of appliance. The box is composed of three assembled parts: the lower part, which snaps onto the trunking and the wall with 4 screws, and serves as an insulating base and a grid separating the various circuits. The upper part is specially shaped to accommodate the appliance mounting frames. The trunking cover, in addition to its protective function, gives the whole a harmonious and elegant shape.

**Etim**

**GROUP EG000006 - Installation ducts for wall and ceiling**

**CLASS EC000079 - Appliance box for skirting duct**

<b>Degree of protection (IP)</b>	IP40	<b>Mounting direction</b>	Horizontal	<b>Material</b>	Plastic
<b>Halogen free</b>	Yes	<b>Anti-bacterial treatment</b>	No	<b>Colour</b>	Anthracite
<b>Impact strength</b>	IK08	<b>RAL-number</b>	7021	<b>Working temperature</b>	-5-60 °C
<b>Decoration</b>	None	<b>Mounting method installation unit</b>	Standard	<b>Height baseboard duct</b>	70 mm
<b>Depth plinth skirting duct</b>	20 mm	<b>Number of device units</b>	6	<b>Equipped with</b>	None


**Technical Characteristics**

**dimensions** 225 x 185 x 50 mm

## Documentation available for download



**Certification**  
Battiscopa Serie  
20.pdf




**General data sheets**  
SCI\_20 BATT.pdf

## Barcode



8033954876294  
**Unit**  
1 NR  
0.3125 [kg]



8059307212687  
**Cardboard**  
8 NR  
0.39x0.295x0.21 [m]  
2.5 [kg]