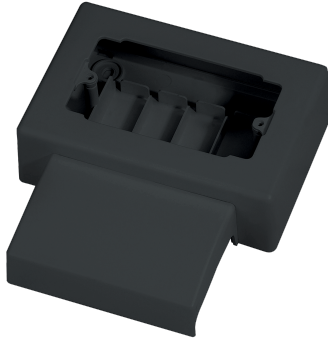


EC20115

4-MODULE TOWER ADAPTOR BOX 108 mm HOLE C.E DISTANCE-SLATE RAL 7021



Trunkings > Wall and ceiling > Skirting and wall trunkings > Series 20 - trunking fittings > Modular boxes for wiring devices

Technical Symbols/Marks/Approvals



Norms

EN 50085-1 EN 50085-2-1

Description

The 4-module 108 mm distance between centers appliance box can be used for the installation of up to 4 Italian standard appliances or 2 multi-standard sockets. The large internal volume allows for the installation of any appliance. The box is composed of three assembled parts: the lower part, which snaps onto the trunking and the wall with 4 screws, and serves as an insulating base and a grid separating the various circuits. The upper part is appropriately shaped to accommodate the appliance mounting frames. The trunking cover, in addition to its protective function, gives the whole a harmonious and elegant shape.

Etim

GROUP EG000006 - Installation ducts for wall and ceiling

CLASS EC000079 - Appliance box for skirting duct

Degree of protection (IP)	IP40	Mounting direction	Horizontal	Material	Plastic
Halogen free	Yes	Anti-bacterial treatment	No	Colour	Anthracite
Impact strength	IK08	RAL-number	7021	Working temperature	-5-60 °C
Decoration	None	Mounting method installation unit	Standard	Height baseboard duct	70 mm
Depth plinth skirting duct	20 mm	Number of device units	4	Equipped with	None


Technical Characteristics

dimensions 165 x 185 x 50 mm

Documentation available for download



Certification
Battiscopa Serie
20.pdf




General data sheets
SCI_20 BATT.pdf

Barcode



8033954876270
Unit
1 NR
0.23 [kg]



8059307212663
Cardboard
10 NR
0.39x0.295x0.21 [m]
2.3 [kg]