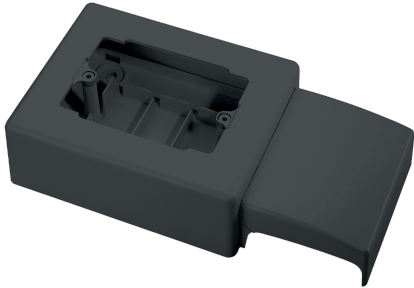


**EC20111**



**3-MODULE WALL ADAPTOR BOX 83,5 mm HOLE C.E DISTANCE-SLATE RAL 7021**



Trunkings > Wall and ceiling > Skirting and wall trunkings > Series 20 - trunking fittings > Modular boxes for wiring devices

**Technical Symbols/Marks/Approvals**



**Norms**

EN 50085-1 EN 50085-2-1

**Description**

The 83.5 mm distance between center lines - 3 modules - wall-mounted device box can be used for the installation of up to 3 Italian standard devices. For installation with a vertical frame profile. The item is composed of four assembled parts: the lower part, which snaps onto the trunking and the wall with 4 screws, which serves as an insulating base and a grid separating the various circuits. The upper part is appropriately shaped to accommodate the device fixing frames. The trunking cover, in addition to having a protective function, gives the whole a harmonious and elegant shape. The integrated end cap allows the trunking to be interrupted without using an additional end cap.

**Etim**

**GROUP EG000006 - Installation ducts for wall and ceiling**

**CLASS EC000079 - Appliance box for skirting duct**

<b>Degree of protection (IP)</b>	IP40	<b>Mounting direction</b>	Vertical	<b>Material</b>	Plastic
<b>Halogen free</b>	Yes	<b>Anti-bacterial treatment</b>	No	<b>Colour</b>	Anthracite
<b>Impact strength</b>	IK08	<b>RAL-number</b>	7021	<b>Working temperature</b>	-5-60 °C
<b>Decoration</b>	None	<b>Mounting method installation unit</b>	Standard	<b>Height baseboard duct</b>	70 mm
<b>Depth plinth skirting duct</b>	20 mm	<b>Number of device units</b>	3	<b>Equipped with</b>	None


**Technical Characteristics**

**dimensions** 212 x 112 x 50 mm

## Documentation available for download



**Certification**  
Battiscopa Serie  
20.pdf




**General data sheets**  
SCI\_20 BATT.pdf

## Barcode



8033576770284  
**Unit**  
1 NR  
0.23 [kg]



8059307212656  
**Cardboard**  
10 NR  
0.39x0.295x0.21 [m]  
2.3 [kg]