

Product datasheet

Specifications



Socket, separate contact, 10 A,
relay type RXM3, screw connector,
250 V AC

RXZE2S111M

Main

Range of product	Harmony Electromechanical Relays
Product compatibility	Plug-in relay RXM with 3 C/O contact
Device short name	RXZ
[I _{th}] conventional free air thermal current	10 A
Product or component type	Socket
Contacts type and composition	3 C/O

Complementary

[U _e] rated operational voltage	< 250 V conforming to IEC < 300 V conforming to UL
Connections - terminals	Screw connectors, 1 x 0.34...1 x 2.5 mm ² (AWG 22...AWG 14) flexible with cable end Screw connectors, 2 x 0.34...2 x 1 mm ² (AWG 22...AWG 17) flexible with cable end Screw connectors, 1 x 0.5...1 x 2.5 mm ² (AWG 20...AWG 14) solid without cable end Screw connectors, 2 x 0.5...2 x 1.5 mm ² (AWG 20...AWG 16) solid without cable end
Shape of pin	Flat
Tightening torque	< 1 N.m for M3 screw(s)
Fixing mode	By screw (panel) Clip-on (35 mm symmetrical DIN rail)
Wire stripping length	8 mm
Contact terminal arrangement	Separate
[U _{imp}] rated impulse withstand voltage	4 kV
Overvoltage category	III
Pollution degree	3
Sale per indivisible quantity	10
Width	27 mm
Product weight	0.058 kg

Environment

IP degree of protection	IP20 conforming to IEC 60529
Dielectric strength	2500 V
Standards	IEC 61984
Product certifications	UL Lloyd's CSA
Marking	CE

Ambient air temperature for storage	-40...85 °C
Ambient air temperature for operation	-40...55 °C

Packing Units

Unit Type of Package 1	PCE
------------------------	-----

Number of Units in Package 1	1
------------------------------	---

Package 1 Height	6.100 cm
------------------	----------

Package 1 Width	2.700 cm
-----------------	----------

Package 1 Length	7.500 cm
------------------	----------

Package 1 Weight	60.000 g
------------------	----------

Unit Type of Package 2	BB1
------------------------	-----

Number of Units in Package 2	10
------------------------------	----

Package 2 Height	6.600 cm
------------------	----------

Package 2 Width	13.600 cm
-----------------	-----------

Package 2 Length	11.000 cm
------------------	-----------

Package 2 Weight	646.000 g
------------------	-----------

Unit Type of Package 3	S03
------------------------	-----

Number of Units in Package 3	200
------------------------------	-----

Package 3 Height	30.000 cm
------------------	-----------

Package 3 Width	30.000 cm
-----------------	-----------

Package 3 Length	40.000 cm
------------------	-----------

Package 3 Weight	13.412 kg
------------------	-----------

Contractual warranty

Warranty (in months)	18
----------------------	----



Environmental Data

Schneider Electric aims to achieve Net Zero status by 2050 through supply chain partnerships, lower impact materials, and circularity via our ongoing “Use Better, Use Longer, Use Again” campaign to extend product lifetimes and recyclability.

[Environmental Data explained >](#)

[How we assess product sustainability >](#)



Environmental footprint

Total lifecycle Carbon footprint	0.7 kg CO2 eq.
Carbon footprint of the manufacturing phase [A1 to A3]	0.4 kg CO2 eq.
Carbon footprint of the distribution phase [A4]	0 kg CO2 eq.
Carbon footprint of the installation phase [A5]	0 kg CO2 eq.
Carbon footprint of the use phase [B2, B3, B4, B6]	0 kg CO2 eq.
Carbon footprint of the end-of-life phase [C1 to C4]	0.2 kg CO2 eq.
Environmental Disclosure	Product Environmental Profile

Use Better



Materials and Substances

Packaging made with recycled cardboard	Yes
Packaging without single use plastic	Yes
EU RoHS Directive	Compliant
REACH Regulation	Free of Substances of Very High Concern above the threshold

Use Longer



Lifetime extension

Repair	No
--------	----

Use Again

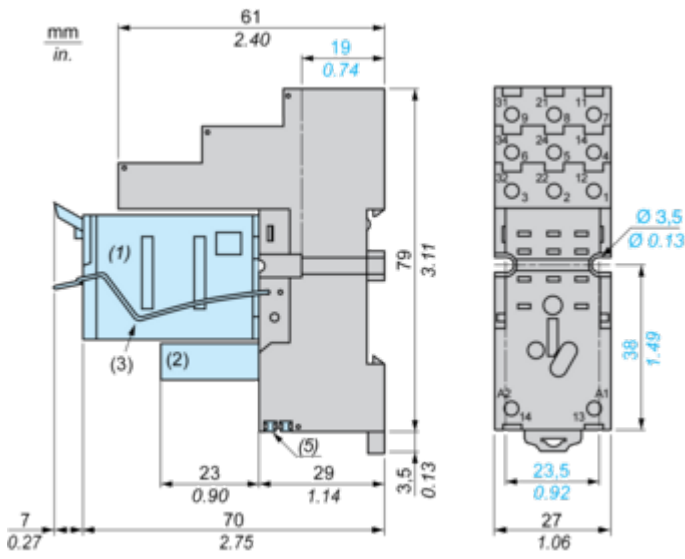


Repack and remanufacture

Recyclability potential, in %	46
End of life manual availability	No need of specific recycling operations
Take-back	No

Dimensions Drawings

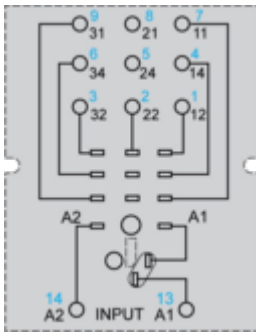
Dimensions



- (1) Relays
- (2) Protection module
- (3) Maintaining clamp
- (4) 2 elongated holes Ø 3.5 mm x 6.5 mm / Ø 0.13 in. x 0.25 in.
- (5) 2 bus jumpers

Connections and Schema

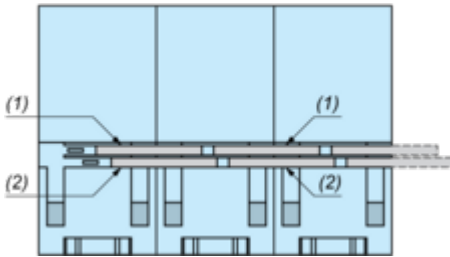
Wiring Diagram



Symbols shown in blue correspond to Nema marking.

Bus Jumpers Mounting on Sockets with Separate Contacts

Example of RXZS2 bus jumper mounting on sockets (view from below)



(1) 2 bus jumpers (polarity A2)

(2) 2 bus jumpers (polarity A1)

Technical Illustration

Dimensions

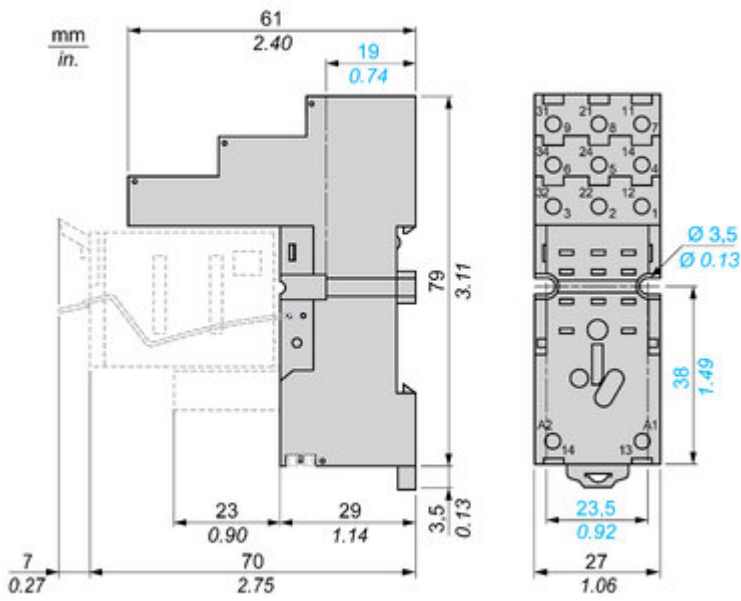
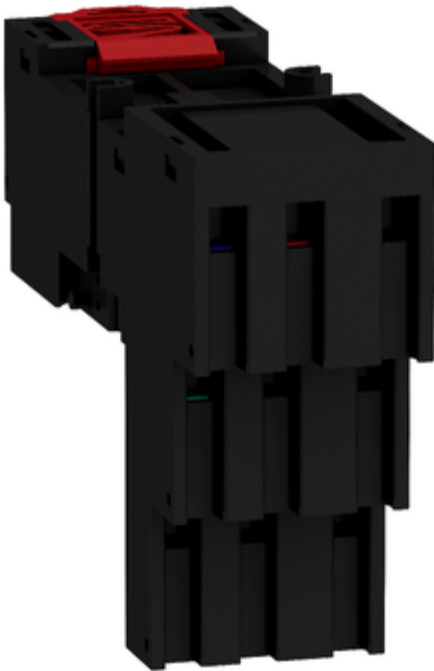


Image of product / Alternate images

Alternative





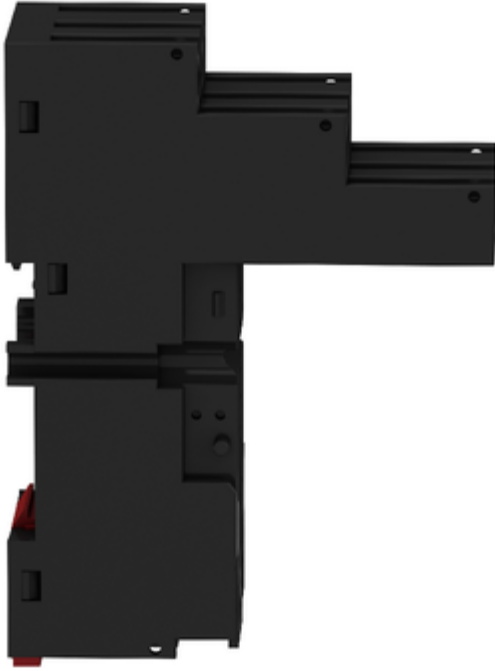


Image of product in real life situation

