



KBR...H42 Cable Tray

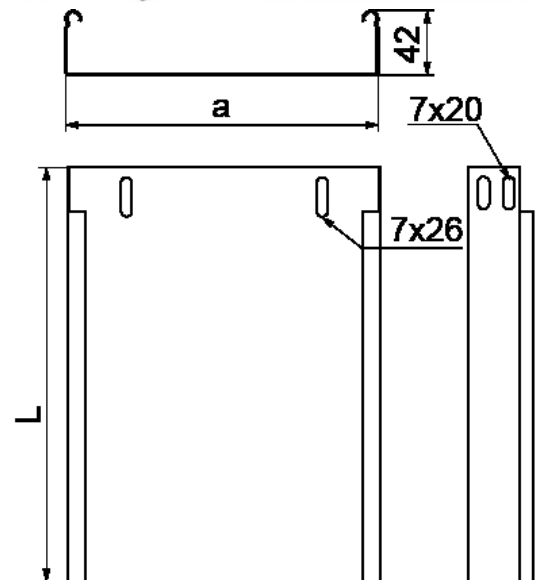
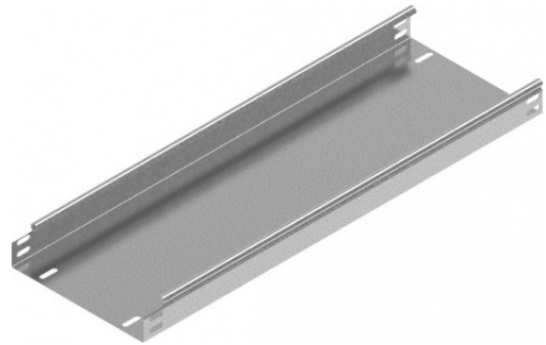
0.5 Sheet thickness 0.5 mm

Information

Usage
Cable routing

Material
S - Sendzimir method galvanised steel PN-EN 10346:2015-09
Available finishes: E - stainless steel L - painting in standard RAL colour

Additional information
Possibility of joining cable tray sections together through sliding one into another and connector-free assembly. For the assembly use Screw Sets SGKM6x10 or SGM6x10.



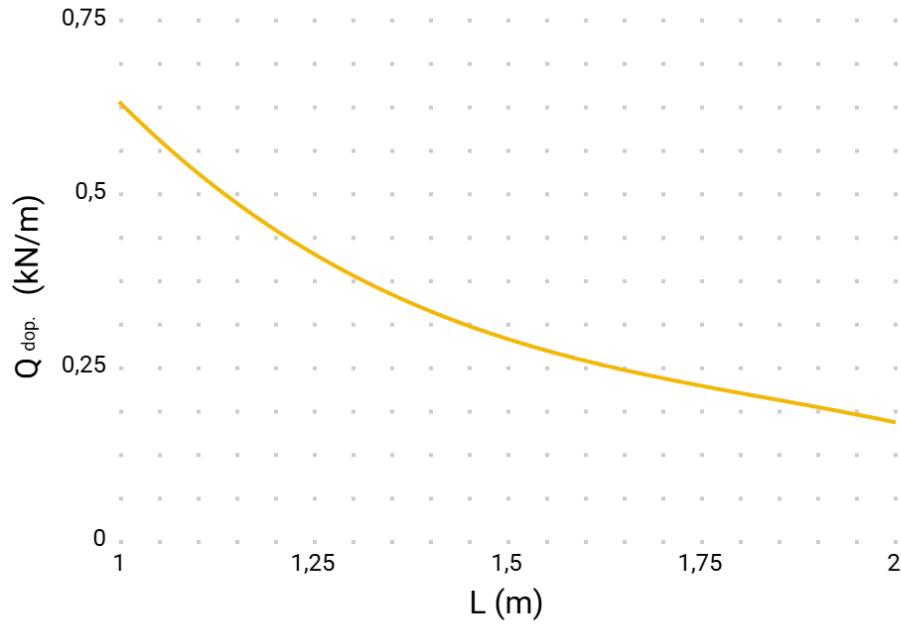
Product versions

Symbol	Catalogue number	Width a (mm)	Length L (mm)	Weight (1m) (kg)	Quantity in box (m.) (szt. / m. b.)	Effective section
KBR50H42/2	141505	50	2,000	0.60	8 / 16	1,900
KBR50H42/3	141605	50	3,000	0.60	8 / 24	1,900
KBR100H42/2	141510	100	2,000	0.80	4 / 8	4,000
KBR100H42/3	141610	100	3,000	0.80	4 / 12	4,000
KBR200H42/3	141620	200	3,000	1.22	4 / 12	8,200
KBR300H42/3	141630	300	3,000	1.62	4 / 12	12,400



Load

KBR...H42 0.5



Examples

