



# CWC100H50...NMC Support Channel

2.0 Sheet thickness 2.0 mm

## Information

### Usage

Direct support of panels and mounting of panel fixing holders

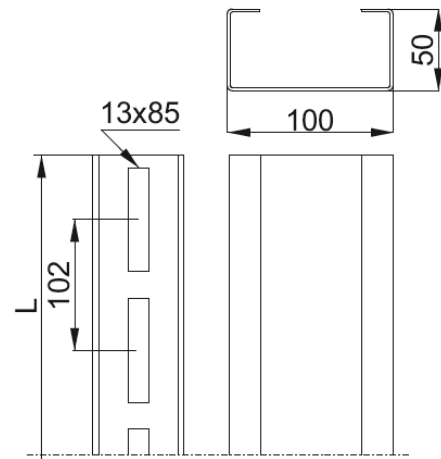
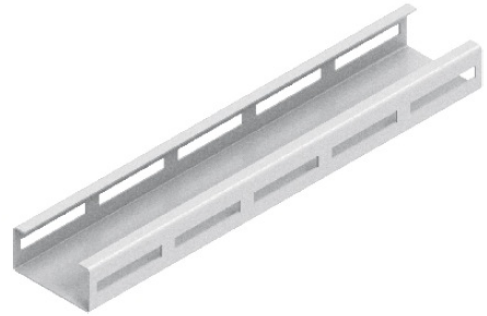
### Material

S350GD steel in:

Magnelis®, MagiZinc®, PosMAC coating

### Additional information

- extended and condensed perforation allows panels of different sizes to be assembled without drilling additional holes in the profile - extended perforation allows for the use of quick fit channel nuts - identical size of perforation in both walls allows assembly in any position For the assembly use SGKFM10x20PV + PW10F Screw Sets



## Product versions

Symbol	Catalogue number	Length L (mm)	Weight 1 pc. (kg)	Quantity (pcs.)
CWC100H50/3,3NMC	867633	3,264	9.85	4
CWC100H50/4,4NMC	867644	4,386	13.13	4
CWC100H50/6,6NMC	867566	6,630	19.70	4

## Examples

