



## OWN.../...MC Universal wind shield with adjustable length

0.5 Sheet thickness 0.5 mm

N New product

### Information

#### Usage

Mounting to systems on flat roofs with a panel angle of 10°, 15° or 20° in order to improve the aerodynamic properties of the system and reduce the weight of the ballast. The covers fit to UPG...MC brackets with M8 threaded holes

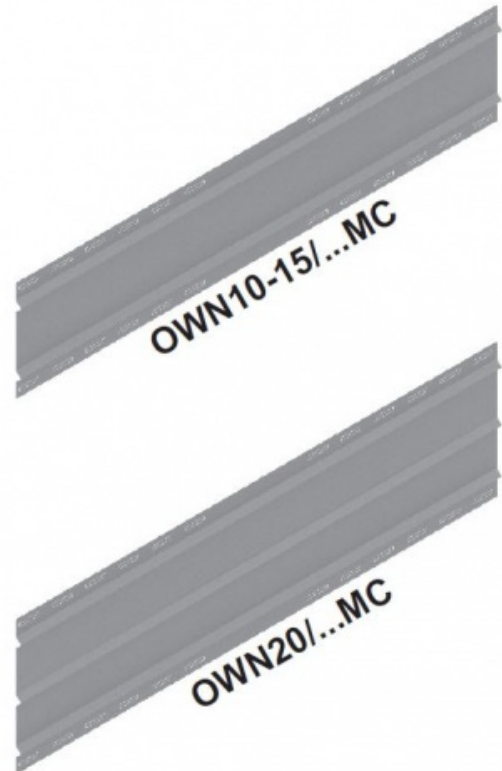
#### Material

S250GD steel in:

Magnelis®, MagiZinc®, PosMAC coating

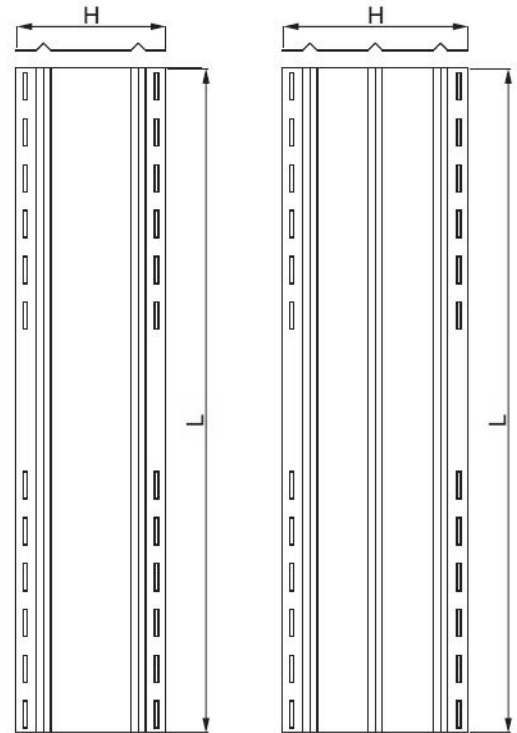
#### Additional information

- special embossing to strengthen and stiffen the covers - specially designed cut-outs allowing to break out hole plugs without leaving sharp edges in the product - dense perforation allowing to mount the cover to the system with different panels - special break-out cut-outs for simple screwing on covers for panel top brackets - fabrication in Magnelis®, MagiZinc® coated material, PosMAC with very high corrosion resistance - no need for a clamping PBK...MC flat bar - super price Use PW8F enlarged washer between OWN.../...MC wind shield and UPG...MC holder





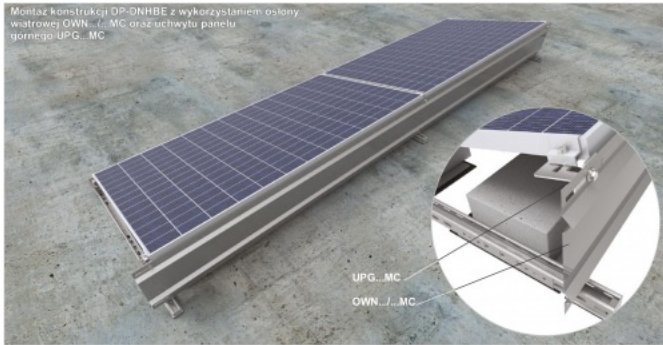
OWN10-15/...MC      OWN20/...MC



## Product versions

Symbol	Catalogue number	Height H (mm)	Length L (mm)	Weight 1 pc. (kg)	Ilość w opakowaniu (kpl.)
OWN10/1,8MC	851018	238	1,800	1.90	5
OWN10/2,12MC	851021	238	2,120	2.20	5
OWN10/2,4MC	851024	238	2,400	3.30	5
OWN15/1,8MC	851518	320	1,800	2.40	5
OWN15/2,12MC	851521	320	2,120	2.90	5
OWN15/2,4MC	851524	320	2,400	3.50	5
OWN20/1,8MC	852018	404	1,800	3	5
OWN20/2,12MC	852021	404	2,120	3.60	5
OWN20/2,4MC	852024	404	2,400	4.10	5

## Examples



Instrukcja montażu osłon wiatrowych



1. Wymierzamy zewnętrzną odległość między uchwytami UPGGC...MC do których jest montowany panel.



2. Dobieramy odpowiednią wielkość osłony do zmierzonej odległości między uchwytami panelu.



3. Płaskim śrubokrętem wylamujemy otwory na początku i na końcu osłon OWN...MC



4. Osłonę dostawamy do uchwytów UPGGC...MC i dokręcamy ją śrubami M8 w gwintowane otwory uchwytów

